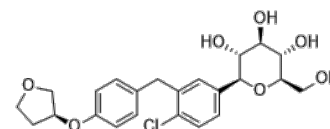


Product Name : Empagliflozin
Cat. No. : PC-22576
CAS No. : 864070-44-0
Molecular Formula : C₂₃H₂₇ClO₇
Molecular Weight : 450.91
Target : SGLT
Solubility : 10 mM in DMSO



Biological Activity

Empagliflozin (BI-10773) is a potent, selective sodium glucose cotransporter-2 (SGLT-2) inhibitor with IC₅₀ of 3.1 nM (hSGLT-2). It has a high degree of selectivity over SGLT-1, 4, 5 and 6, and has potential for the oral treatment of type 2 diabetes mellitus (T2DM).

References

Aires I, et al. *Curr Opin Investig Drugs*. 2010 Oct;11(10):1182-90.

Grempler R, et al. *Diabetes Obes Metab*. 2012 Jan;14(1):83-90.

Caution: Product has not been fully validated for medical applications. Lab Use Only!

E-mail: tech@probechem.com